

BRIEF TO THE PEOPLE OF SOUTH DEEP

WEEKLY UPDATE – 18 to 22 January 2021



Benford Mokoatle
VP: South Deep

LET'S TALK

Reporting illness, annual leave to neighbouring countries and new uniforms



Coronavirus

Together we can protect ourselves and those we care about

Colleagues,

As the COVID-19 pandemic continues to affect all of us, we want to remind you how important it is that you take the best possible action if you feel sick.

This means:

- If you feel sick with COVID-19 symptoms, isolate yourself and inform us and arrange to be tested
- If you test privately, tell us if you have tested positive so that we can help you through your treatment and recovery
- Get medical attention early. Don't wait until you are very ill before you contact a doctor. The longer you wait, the more serious your illness can become

When to contact the South Deep call centre:

- You feel sick
- You may have been exposed and seek advice or to be tested
- You have tested positive through a private test
- You want advice about medical treatment
- You want advice about isolation
- You have questions about being away from work, or returning to work

Call the call centre on 072 515 9753 or 072 649 8255, Monday to Friday from 08H00 to 10H00 and 15H00 to 17H00

Leave to neighbouring countries

Under Level 3 lockdown restrictions, travel across South Africa and to neighbouring countries is discouraged. That's because the virus travels through people – the more we travel, the more the virus travels. So travelling puts ourselves and others at greater risk of getting COVID-19.

More than that, there are strict restrictions involved in crossing borders that may make travelling difficult for employees from Mozambique, Lesotho, Swaziland and other neighbouring countries. While employees with work permits may enter and exit our border points, there are a number of challenges:

- 1** All travellers arriving at South African borders need to have a negative COVID-19 PCR test result that is no older than 72 hours. This must be signed and verified, with your passport number clearly shown. These tests are sometimes difficult to get done and can be expensive in neighbouring countries.
- 2** Some countries (such as Botswana), require that employees have a valid negative COVID-19 test when leaving South Africa. Employees would need to arrange this themselves.
- 3** We have seen many delays at all the major land border posts, with people sometimes waiting for days to re-enter South Africa. This is not only inconvenient, but it also means that anyone stuck at those border crossings may be more exposed to others with COVID-19.

We understand that many of our colleagues are missing their families and want to go home.



safety



integrity



respect



responsibility



innovation



delivery



GOLD FIELDS

BRIEF TO THE PEOPLE OF SOUTH DEEP *continued*

WEEKLY UPDATE – 18 to 22 January 2021

Leave to neighbouring countries (continued)

We further understand that not going home when your annual leave is due is a big sacrifice for you and your family. But we ask that everyone heeds the call made by President Ramaphosa to stay in place during lockdown and to avoid travel. By doing this we can limit the spread of COVID-19 and protect yourself and your loved ones. Rather, delay your annual leave to a time when you are again able to travel freely and without fear. We thank each and every one of our team members for making this sacrifice to keep us all safe and healthy.

Your questions answered: new uniforms

Who will receive a new uniform?

Everyone working at South Deep on a long-term basis will be issued with a new uniform in accordance with the schedule we shared in last week's brief.

How many uniforms will everyone receive?

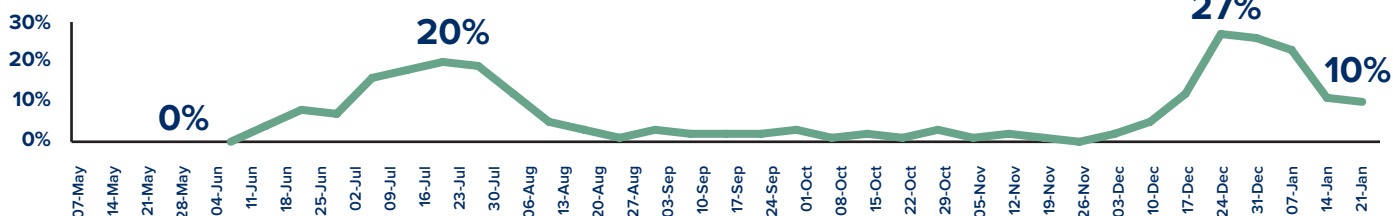
Individuals will initially be issued with one uniform, to allow us to roll-out the new uniforms to everybody. Once completed, everyone will be issued with a second uniform. We expect this to be six months later, but timing will depend on our supplier.

How often will our uniforms be replaced?

This depends on the work you do and how tough this is on the fabric of the uniform. For example, those working in backfill will receive a new uniform more often than someone working on surface. For most employees, an overall will be issued every six months. If the overall is deliberately damaged or stolen it will need to be replaced at the owner's own cost.

We encourage you to take care of your uniform and wear it with pride

7 Day Cumulative % Positive Tests



The graph above shows just how significant the second wave of COVID-19 has been, with South Deep's percentage of positive cases in this period being 7% more than what we experienced in the first wave. We are reminded that another wave can happen at any time, and our best defence is to continue the behaviours of mask wearing, maintaining social distancing, limiting our exposure to other people, and washing and sanitising our hands and surfaces. As members of our households go back to work and return to schools, we stress the importance of maintaining all COVID-19 hygiene protocols in these environments to keep the family healthy and COVID-19 free.

BENFORD

Benford Mokoatle
VP: South Deep Gold Mine



safety



integrity



respect



responsibility



innovation



delivery



GOLD FIELDS

Testing update

POSITIVE CASES PER AGE CATEGORY

BETWEEN 20-35 YEARS OLD

Total number positive COVID-19 cases in this age group



294 **70**

▲ (up 9% from previous week) ▲ (up 15% from previous week)

BETWEEN 36-50 YEARS OLD

Total number positive COVID-19 cases in this age group

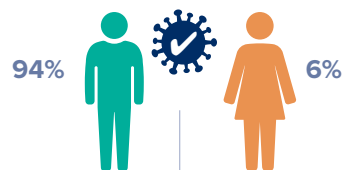


349 **72**

▲ (up 8% from previous week) ▲ (up 11% from previous week)

BETWEEN 51-65 YEARS OLD

Total number positive COVID-19 cases in this age group



122 **8**

▲ (up 5% from previous week) ▲ (up 14% from previous week)

POSITIVE CASES PER TESTING CATEGORY

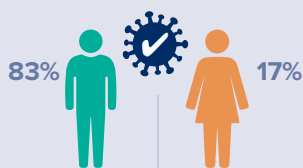
At risk



7 **1**

▲ (up 17% from previous week) (no change from previous week)

Returning to work



162 **33**

▲ (up 8% from previous week) ▲ (up 10% from previous week)

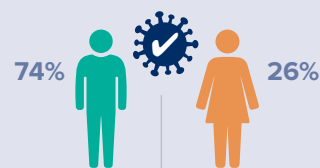
Risk-based sampling



509 **86**

▲ (up 8% from previous week) ▲ (up 13% from previous week)

Persons under investigation



87 **30**

▲ (up 10% from previous week) ▲ (up 11% from previous week)

POSITIVE CASES PER EMPLOYMENT CATEGORY

PERMANENT EMPLOYEE



391 **113**

▲ (up 7% from previous week) ▲ (up 11% from previous week)

CONTRACTOR



368 **34**

▲ (up 10% from previous week) ▲ (up 13% from previous week)

TEMPORARY



6 **3**

▲ (up 20% from previous week) (no change from previous week)

	At risk		Returning to work		Risk-based sampling		Persons under investigation		Total
	This week	Total	This week	Total	This week	Total	This week	Total	
Tested (1 st round)	0	181	0	2 539	0	2 316	0	142	5 178
Tested (2 nd round)	0	131	0	685	0	5 796	0	41	6 653
Tested (3 rd round)	5	5	48	42	206	206	5	5	258
Positive	1	8	4	196	15	594	5	117	915
Negative	0	305	18	3 044	141	7 674	0	71	11 094
Awaiting Results	4	4	26	26	50	50	0	0	80
Deceased	0	0	0	0	0	0	1	6	6
Active cases	0	1	0	10	0	92	0	6	109
Recovery Testing	0	4	0	18	0	90	0	33	145
Employees in Hospital	0	0	0	0	0	0	1	1	1
Recoveries									
Recovered as per NICD	0	7	56	186	94	502	9	111	806
Recovered (back at work)	0	7	88	169	82	462	9	101	739
Unfit for Work/ Sick leave	0	0	3	3	9	9	2	2	14
Medical Assessment in Progress	0	0	12	12	27	27	0	0	39
Not yet Assessed	0	0	2	2	4	4	8	8	14